



Recommended Technologies

University of Michigan
School of Nursing
2004-2005

Welcome!

This deck presents a number of instructional technology options. All are reasonably easy to use in the classroom, though you might want the assistance of a designer to do the initial setup.

Technologies are categorized by their primary function: content delivery, interaction, and assessment of student learning.

View this presentation in “Slide Show” mode, then click the images to see more information or a live demo of the technology.



The Basics

This set of technologies will probably be used in nearly every course at the School of Nursing – face-to-face or online.

Course Management Software

Uses:



Content Delivery



Interaction



Assessment

■ Ctools

■ Used for:

- Overall course "shell"
- Location for delivering content
- Live web chats
- Threaded discussions
- Assignments
- Announcements
- GradTools



Ease of Use: Easy

Reliability: Improving

Recommendation: Expected

E-Mail – Various Programs

Uses:



Content Delivery



Interaction



Assessment

- Use your favorite e-mail program.
 - Mulberry
 - Webmail
 - Eudora Light
 - Outlook (additional cost)
- Primary tool for communicating with students
- Check daily
- Can be used to send/receive assignments



Ease of Use: Easy

Reliability: High

Recommendation: Expected

PDF Documents – Adobe Acrobat

Uses:



Content Delivery

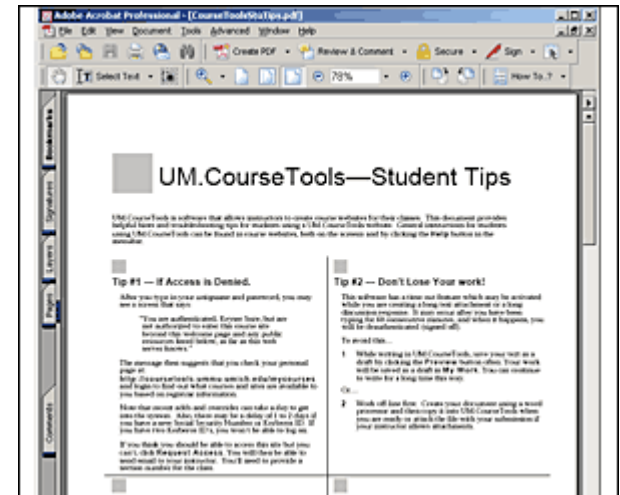


Interaction



Assessment

- Creates easy-to-print documents from:
 - Scanned documents (like journal articles)
 - Microsoft Word documents
 - PowerPoint
- Please respect copyrights
- Need to be optimized for small file size
- Can have clickable links and “table of contents”



Ease of Use: Easy - Med

Reliability: High

Recommendation: Highly Suggested – but try using eReserves first

Presentations - PowerPoint

Uses:



Content Delivery

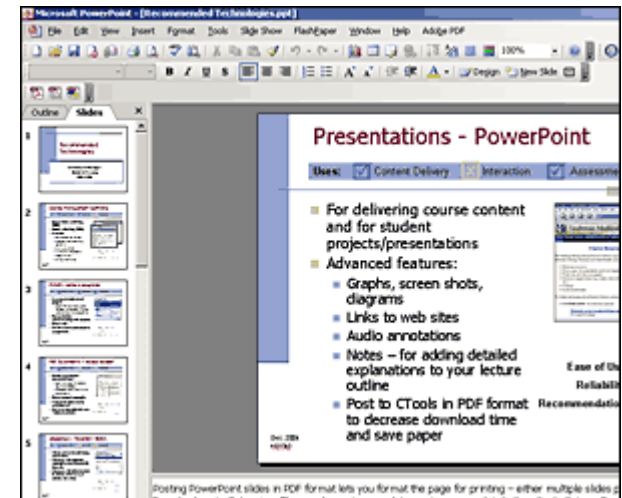


Interaction



Assessment

- For delivering course content and for student projects/presentations
- Advanced features:
 - Graphs, screen shots, diagrams
 - Links to web sites
 - Audio annotations
 - Notes – for adding detailed explanations to your lecture outline
 - Post to CTools in PDF format to decrease download time and save paper



Ease of Use: Easy - Med

Reliability: High

Recommendation: Highly Suggested

eReserves – Taubman Library

Uses:



Content Delivery

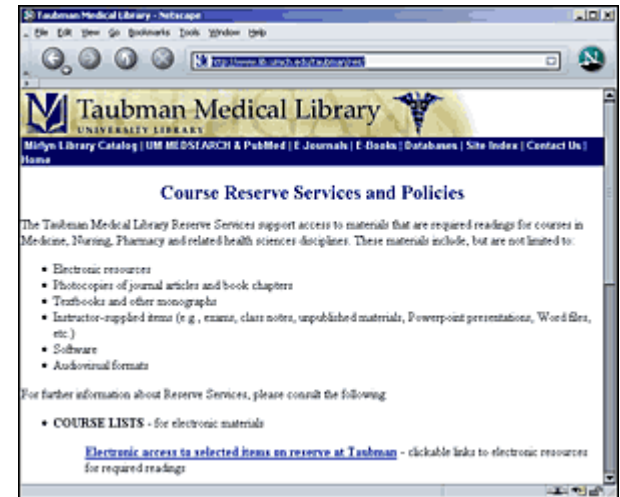


Interaction



Assessment

- Library service for delivering course texts
- Librarians will negotiate copyrights, licensing/royalty fees, etc.
- Librarians will either find link to articles online or scan articles (for a fee)



Ease of Use: Easy

Reliability: High - Med

Recommendation: Highly Suggested



Easy Add-Ons

This set of technologies can be incorporated into existing courses to let students to interact with course materials in ways traditional methods won't allow.

Media Objects – Various Formats

Uses:



Content Delivery

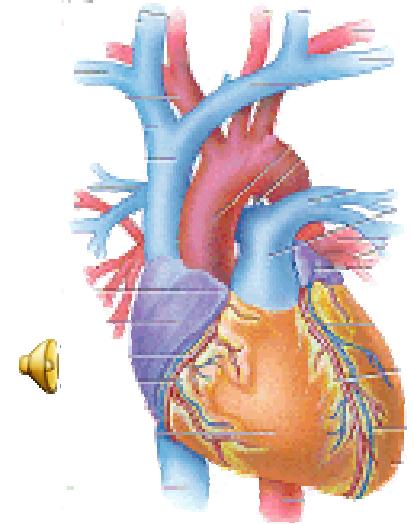


Interaction



Assessment

- Small pieces of media that **supplement** text, etc.
- Examples:
 - Photos
 - Video clips
 - Audio (heart sounds, etc.)
 - Diagrams
- Require collaboration with instructional designer and several days to produce
- We'd like to create a "library" of media for use in multiple courses



Ease of Use: Easy

Reliability: High

Recommendation: Search for pre-made objects before making new ones

Learning Modules – Various Formats

Uses:



Content Delivery

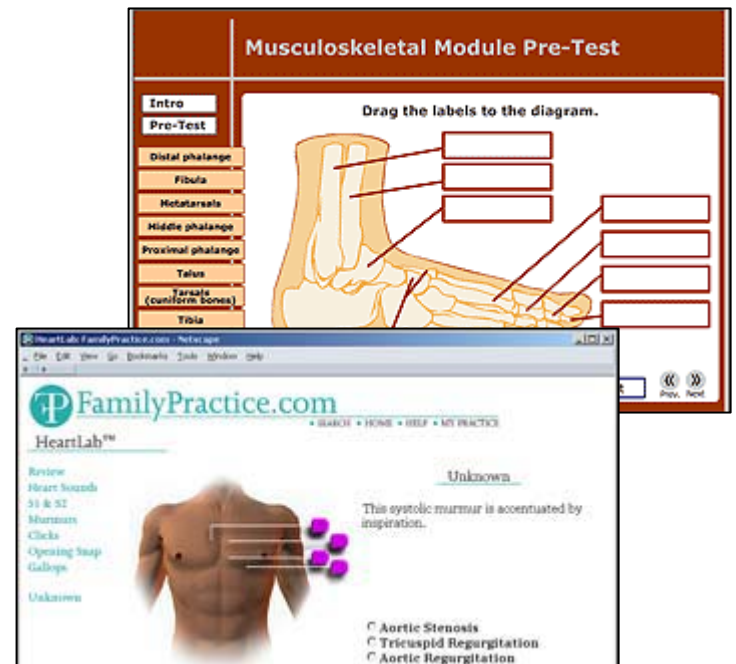


Interaction



Assessment

- Extensive packages of text, images, media about a certain topic.
- Could **replace** parts of textbook, readings, etc.
- Can have built-in study and quiz tools
- Many exist **free** or for purchase on the web
- New ones require collaboration with instructional designer and several **months** to produce



Ease of Use: Easy

Reliability: High

Recommendation: Look for pre-existing ones first

Digital Video

Uses:



Content Delivery



Interaction



Assessment

- One-way video lets you present original recordings (e.g., guest speakers) and some prerecorded videos over the web
 - CDigix takes care of encoding and copyright
- Video feedback for threaded discussions
- Some types can also be burned to CD or DVD for students with slow internet connections



Ease of Use: Easy

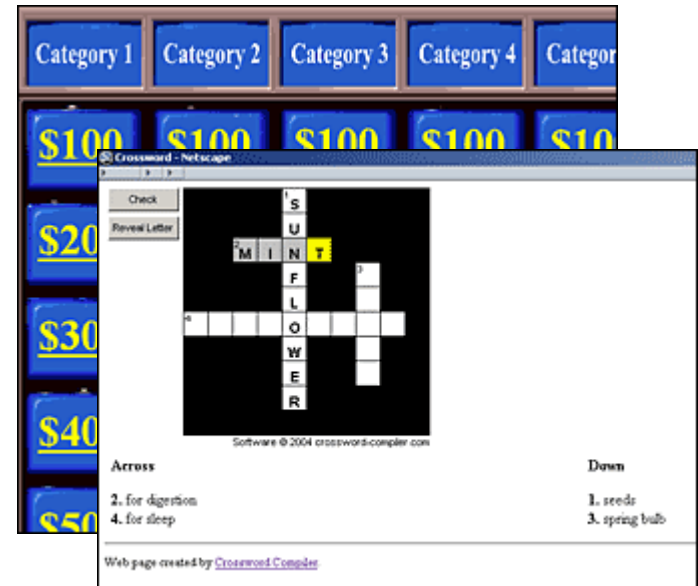
Reliability: Med

Recommendation: Pedagogically, not a good idea to record and post long lectures

Instructional Games – Various

Uses: Content Delivery Interaction Assessment

- To help students memorize facts and terms
- To help students apply knowledge
- Can be done individually or collaboratively
- We have good templates for include quiz games (like Jeopardy), crossword puzzles, and are adding more
- See <http://www.nursing.umich.edu/facultyresources/bestPractices/games.html>



Ease of Use: Easy

Reliability: High

Recommendation: Write your own clues in existing formats

Online Testing – Software TBD

Uses:



Content Delivery



Interaction



Assessment

- To deliver tests online
- Can also be used for homework, self-testing (as a study aid)
- The University currently has no **reliable** testing software
- CTools will have a new testing function in 2006-7.
- Finding good testing software is high on our list of priorities.



Ease of Use: TBD

Reliability: TBD

Recommendation: Don't use
Lessons – it
crashes



Course-changing strategies

This set of technologies requires some reworking of your syllabus – but with potentially vast benefits.

SimMan

Uses:



Content Delivery



Interaction



Assessment

- “Ultra-Mannequin” for practicing procedures such as catheterization, chest tubes, suction
- Realistic sounds, fluids, and actions
- Responds to student actions
- Good prep for clinicals and emergency situations
- Help is available for developing scenarios



Ease of Use: Medium

Reliability: High

Recommendation: Look for pre-existing scenarios first

Clinical Simulation Center (medSch)

Uses:



Content Delivery



Interaction



Assessment

- Located at UMHS
- We have access to this lab
- Resources:
 - Additional SimMan
 - Human Patient Simulator
 - PediaSIM
 - Code Blue Baby
 - Birthing Simulator



Ease of Use: Medium

Reliability: High

Recommendation: Book Early

Online Modules Within CTools

Uses:



Content Delivery



Interaction



Assessment

- Coming in 2006.
- Neatly arranges course materials – readings, interactive modules, web pages – in an easy-to-follow package.
- Solves the problem of trying to put CTools materials in the correct order.



Ease of Use: Easy

Reliability: TBD

Recommendation: Use for online courses or modules in F2F courses



Mostly for Online

This set of technologies is most useful for courses with extensive online components, but may have applications in face-to-face courses, too.

Web Conferencing - Contribute

Uses: Content Delivery Interaction Assessment

- Allows groups to speak to each other, record meetings, and **share software**
- Excellent for **online teaching** of subjects that require **live** diagramming – e.g., statistics
- Can be used for **virtual meetings** and student presentations
- Instructor can allow any student to control the screen
- About **\$5/hr per person**; “rented” through School of Information



Ease of Use: Easy

Reliability: High

Recommendation: Use it when phone conferencing isn't adequate

Telephone Conferencing - ITComm

Uses:



Content Delivery

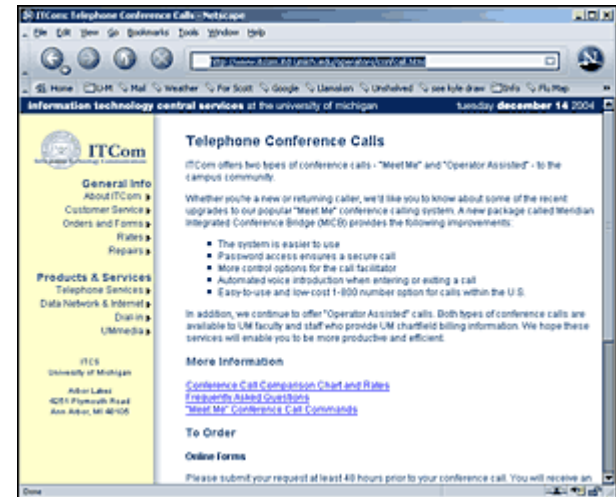


Interaction



Assessment

- A simple way to enable **group discussion** for online seminar courses
- Not recorded – no accommodation for students who can't attend
- Some people find it easier to follow than online chats



Ease of Use: Easy

Reliability: High

Recommendation: Use when verbal discussion is adequate

Video Conferencing – Polycomm

Uses: Content Delivery Interaction Assessment

- Two-way video lets all participants **see and talk** to each other (though facial expressions are hard to read)
- Participants need to travel to central locations – in Ann Arbor, go to the Duderstadt Center.
- Subsidized for University events
- Less convenient than web conferencing but more convenient than traveling to a face-to-face meeting



Ease of Use: Easy

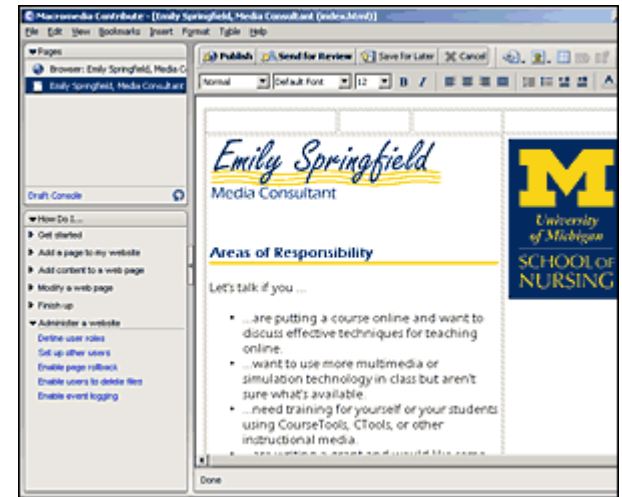
Reliability: High

Recommendation: Useful, but second choice to methods not requiring travel

Freiform Web Sites

Uses: Content Delivery Interaction Assessment

- SiteMaker
 - Web-based, free
 - Limited templates
- Dreamweaver
 - Fully-functional, powerful
 - Best for advanced users
- Consider using a CTools project site instead – adequate for many projects



Ease of Use: Med - Hard

Reliability: High

Recommendation: Use only if appropriate

Questions?

Contact Emily Springfield, your
Instructional Technology Designer!

espring@umich.edu